



GRACE COVENANT PRESBYTERIAN CHURCH



Partial 2019 Confirmation Class and Mentors Class and Mentors

GRACE NOTES

JUNE 2019 | Vol 37, N6

“Do not neglect to show hospitality to strangers, for by doing that some have entertained angels without knowing it.” – Hebrews 13:2

Visitors delight us.

Our goal is simple: make all people feel welcomed, not overwhelmed. We were all visitors once and remember how it feels to try a new place of worship. Attend as often as you want. Visitors are welcome at all GCPC events, classes and small groups as well as in worship. We will always be glad to see you!

Join us for coffee in between our two services or grab a cup of coffee in Heartland Hall on your way to Sunday School class. Heartland Hall is located next to the Sanctuary. There are always people to visit with or things to learn about if you want to just hang out.

REAL FAITH
REAL STORIES
REAL GRACE

For God has not given us a spirit of fear, but a spirit of power, love and a sound mind.
- 2 Timothy 1 v 7

11100 College Boulevard
Overland Park, KS 66210
913-345-1256
office@gcpc.org
gcpc.org

We'd be willing to bet that most of us don't realize how much is happening on a regular basis at Grace Covenant. The focus for many of us is worship on Sunday mornings and the different teams we serve on (*such as Children's Team, KAIROS, Mission Team, Facilities Team, Deacons, and...well, you get the picture*).

But there are many groups and activities meeting at Grace Covenant, that consider it their home. Two of the most obvious are PPS (Pioneer PreSchool) and KDO (Kid's Day Out). PPS is a privately-owned preschool that has been part of our family for years, with a well-run and popular program. KDO also has a talented staff and wonderful program, but it is part of the ministry of our congregation. These two programs offer quality experiences for young children in our community.

Who else uses our facilities? AA (Alcoholics Anonymous) meets here 7 days a week. GCPC sponsors Scouts BSA Troop 122, which is now expanding to offer opportunities for girls too. In Heartland Hall, you can find rows of painters and canvases from Johnson County Community College on Tuesday mornings, while on Thursday mornings, some very talented woodcarvers gather to share their skills together.

A small gathering of Algerian Christian immigrants gather to pray together weekly at GCPC. Our GCPC women's circles, men's and women's Bible studies, crafters, and Bunco players meet throughout the month. Every month it seems as though another group is meeting for a special occasion (like HOA meetings, gatherings of quilters' guilds, and more).

Many of these groups give a donation to the church for the use of our facility and others are simply part of the ministries of Grace Covenant. It has been estimated that mainline Christian denominations (Presbyterians, Methodists, Lutherans, and the like) donate billions of dollars of building usage every year across the United States. Our community would find the quality of life impacted without faithful and generous congregations like ours.

We have barely touched the many activities going on in our church building (*without mentioning the music and youth programs that are often present*), but it's good of us all to realize that our support of the church means we're also supporting these many wonderful groups and programs. Our ministry together touches more people that we realize – thanks be to God.

Peace be with you all,

Mitch & Sue

There are many groups and activities meeting at Grace Covenant, that consider it their home



Celebrating our Children

Lunch and Fellowship

June 9 // 11:15am

Heartland Hall & South Garden



Celebrating our Children



Can you volunteer to help with the luncheon?

We need help...

SUNDAY, JUNE 9

PRE-LUNCH

4 people needed from 9:30-11:00am to set-up food/misc.

DURING LUNCH

Need 6 people from 11:15am – 1:00pm (approximately) to oversee/assist with lunch and beverages/misc.

CLEAN UP

Need 6-8 people from 1:00-1:30pm (approximately) or until done, to take down tables and misc jobs to tidy up.

IF YOU CAN HELP, CONTACT:

Rosemary Gibson
at regibson1945@gmail.com,
OR, sign-up on the bulletin board outside the kitchen.

Thank you!!



GRACE COVENANT
PRESBYTERIAN CHURCH

Let's celebrate the contribution of our children to GCPC, and their role in the life of the church!

**Inflatable Fun!
Lawn Games!**

Bring lawn chairs/blankets if you want to sit in the garden area.

MENU: Hot Dogs and Sides/Cookies

Members are asked to bring:

- Last Name A – D // Cookies
- Last Name E – M // Veggies/Fruit
- Last Name N-S // Beans/Salads
- Last Name T – Z // Chips/Dip

This FUN event is supported by Connections & Care, Children's Team and the Welcoming/Marketing Teamand relies upon the support of the congregation.

Winter Is Coming!

Everyone will need a coat this next winter season.

Grace Covenant will be collecting new and gently used winter coats for the Johnson County Christmas Bureau through the end of June. Donations may be placed in the barrel in the Weekday Entrance.

Thank you for your generosity!





VBS is counting down to launch!

JUNE 3-7, 9am to Noon, Ages 4 Years to 5th Grade

We can't wait to blast off for an out of this world adventure!

"Glory to God, who is able to do far beyond all that we could ask or imagine by his power at work within us!" Ephesians 3:20

The church is fueled up and ready for an amazing week! Our co-directors, **Erin Frye** and **Lindsay Bucl** have been working hard to put everything into motion. Our decorating team, **Kristy Shaw**, **Christy Soule**, and **Jenny Stromberg** have been creating incredible decorations for the building.

There is still time to register. You can register on line through Sunday, June 2 at cookesburyvbs.com/gracecovenantpc2019

Register in the Concourse any morning of VBS! If you can't attend all week, that's okay, come the days you can. We'll be glad to have you!

From the Mission Command Post

Every voyager has a mission, and this year at VBS our mission will support two wonderful programs. Our daily offering will support the work of the **KC Astronomical Society**. KCAS is dedicated to promoting interest and education about astronomy and related sciences. We are excited to experience the KCAS star lab during VBS!

We will also be collecting school supplies for **Apache Elementary school**. Your contributions along with the participants will make a difference.

HERE'S THE DAILY SCHEDULE:

	Offering	School Supplies donation
Monday:	Penny	Crayons and markers
Tuesday:	Nickle	Glue sticks and white glue
Wednesday:	Dime	Pencils and notebooks
Thursday:	Quarter	Rulers and folders
Friday:	Dollar	Dry erase markers, sticky notes, headphones

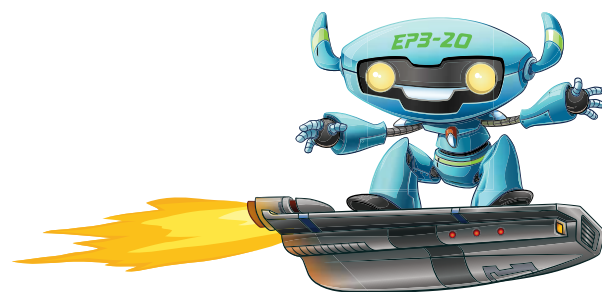
June Mission Offering!

The GCPC Mission Team is joining VBS in collecting school supplies for **Apache Elementary school**. You can bring the school supplies listed to the left throughout the month of June. Please bring your donation and look for the box in the Sanctuary during VBS and in the concourse afterwards. **Please help us, as we help the children. Thank you!**

Come and Worship at The Space Station Outpost!

Sunday, June 9, 10am

Everyone is invited, the VBS children, families, and all the congregation to come together one more time and give glory to God! We will wrap up our VBS celebration by singing our favorite VBS songs and children will assist with worship. We'll get to say so long to our robot friend, EP3-20 whose name comes from the Vector Verse of the week, "Glory to God, who is able to do far beyond all that we could ask or imagine by his power at work within us!" Ephesians 3:20 It's going to be an out of this world morning! If you have a VBS shirt, please wear it.



Calling All Decorating Volunteers

If you can lend a hand, we could use the help. We will be finishing up decorating the building on Saturday, June 1st and Sunday July 2nd.

If you can help us out please drop by during one of the times listed below:

Saturday, June 1 5pm - 9pm
Sunday, June 2 Noon - until finished

It's going to be a lot of fun! We hope you'll join us!

Grace Creates Faith Stories

Summer Sunday School // 10am in Heartland Hall

Faith for a lifetime is learned through the sharing of stories and through enjoying creative activities together.

This summer the Children and Adult Ministry Teams are joining together to create an intergenerational Sunday school program for all ages. Each week children, youth, and adults will enjoy unique stories of how faith inspires us as individuals, families, and as a congregation. These stories will inspire us to explore deeper through creative activities for everyone to enjoy together. Come and join us.

(PARENTS: this program is designed for family participation. Parents must participate with their children. Nursery care will be provided for children under 3 years old.)

▶ JUNE 16

"Our Story is God's Story"

Led by - Rev. Sue Trigger

Come create a GCPC story wall made from your stories and art.

▶ JUNE 23

"Building a Church Community"

Led by - Tim Hayden

Learn about the impact of GCPC in the lives of those touched by the ministry and service of the congregation. Enjoy a little trivia competition, create a church with creative art supplies, and join in a service project.

▶ JUNE 30

"Baking Something Wonderful"

Led by - Lynn Long

Join Lynn as she shares her love of cookie baking and how God uses her talent to bring joy to others. We will be frosting and tasting delicious cookies!

▶ JULY 7

One Service Sunday

M&M Trip led worship at 10am

▶ JULY 14

"Creative Space"

Led by - Julie Webb

Come enjoy the creative talent of Julie Webb as she shares her story with creative activities.

▶ JULY 21

"Journeys of Faith"

Led by - Mary Sue Thomas, Ann Shadburn, Harold Frye

What holds families together through life's journeys? For the Frye family, a strong faith instilled in sisters and brothers from their earliest ages formed bonds that remain resilient today. The core of this family, from parents who placed their faith in God, continue traditions that implant values in succeeding generations.

▶ JUNE 28

"Rockin' Out Good News"

Led by - Chris Frye

Come explore how faith and art can come together to share joy, love, and all kinds of good news with others.

▶ AUGUST 4

"Building a Legacy"

Led by - Harold Frye

When brain cancer claimed Jeremy Frye in 2008, his family quickly moved to fill their loss with something that he would have done himself. The strong support of Grace Covenant motivated his family to start an initiative to supply used musical instruments to children and youth who, otherwise, wouldn't enjoy the gift of music in their lives. The [Music 4 Jeremy's Cherubs Foundation](#) has grown in many ways, donating more than 2200 instruments locally and around the world.

▶ AUGUST 11

"Funday Sunday"

Bring a finger food to share, enjoy conversation and get to know your church family better. No lesson plan, just food and fellowship.

Youth Page



Congratulations, Confirmands!

On May 19 we welcomed eight confirmands as new members of Grace Covenant Presbyterian Church. Their faith statements are available in the concourse and are a fantastic representation of the individuality, creativity, and spirituality of our entire group. While no two statements are alike, each capture the important and unique aspects of the faith of each writer; connecting the youth through similar convictions of faith. *We extend a warm welcome to Lauren Callender, Camille Chaffin, Marco Conti, Miles Dalton, Kelly Kowalczewski, Ben Lodge, Ben Mason, and Maggie Shaw.*

Car Wash

Our group is in town this Father's Day and planning a great car wash this year! Just leave your dirty car with us when you come to worship Sunday morning and leave with it clean. Donations to the youth program are gladly accepted. Youth, please bring car washing supplies and towels with you on **June 16**. Parents, we need you as drivers. Youth will have their own worship service during the 10am hour. Hope to see everyone there!



M&M Trip

This June our high school youth and adult sponsors will head to the gulf coast of Texas where we will serve with Presbyterian Disaster Relief to help those who have struggled with severe hurricane damage over the past year and a half. We will be working on either new homes or refurbishing some that have been damaged. We don't know exactly what projects our group will be assigned to but expect it will be installing insulation, drywall, painting and/or flooring. Our host church is in Corpus Christi and we expect to be serving in nearby Rockport, TX. Please pray for us as we prepare for the adventure and while we are serving **June 21 – 29**. *See the Music Page for a more detailed schedule of our trip.*



Summer Kick-Off Party

Youth and their families are encouraged to come help us kick off the summer on **June 2** at our summer kick-off party Miles' house. Expect a good game of 9 square in the air and other activities as well as a time to just kick back and connect with each other. We'll provide the entrees and ask families bring sides and desserts.



Upcoming Events

- Summer Kick-Off Party — June 2
- VBS Help — June 3–7
- Car Wash — June 16
- M&M Final Prep Night — June 19
- Mission & Music Trip — June 21–29 (*see music page for trip details*)
- M&M Led Worship — July 7
- Massanetta and Triennium — July 15–20
- Middle School Mission Experience — T.B.D.
- Canoe Trip — August 2–4

Music Notes



MANY THANKS

"Thank you" to the folks who served as our **M&M** Planners this year: Jacob Battaglioli, Laurie Callender, Lindsay Callender, Amy Kowalczewski, Miles McDonald, Rebecca Prater, and Brad Schmit.

"Thank you" to the folks who helped us in additional ways to get ready for this trip: Kim Krueger, graphics, publications, and promotion; Linda Bruns, Ex! rehearsal accompanist, and Patrick Bell for all of the office help.

And . . . thank you to all of you who gave financially to support our trip through the **M&M** candy tube fundraiser and during the **M&M** Silent Auction. *"It takes a village!"*

Looking Ahead to Music & Worship Events June & July with Lots of **M&M** Trip Details

MISSION & MUSIC HAPPENINGS

M&M Trip to Coastal Bend of Texas

Friday, June 21 – Saturday, June 29, 2019

Our theme this year is "The Storm Is Passing Over"

We will be working with people recovering from Hurricane Harvey of August 2017

Sunday, June 16

Prayer bracelets will be passed out to the congregation in both worship services. Please pray for the **M&M**er on your bracelet.

Wednesday, June 19

Final Prep Night for all going on the **M&M** trip (youth & sponsors)

6-8pm Heartland Hall, Sanctuary, & Concourse

8pm Exaltation! & Ex! Ringers' Final Rehearsal Concert in our Sanctuary
All are welcome!



"LIKE" GCPC on Facebook at:
@GraceCovenantPresbyterian
See upcoming VBS and M&M photos and information on the life of the church!

Concert — November 10, 2019

East Hill Singers from Lansing Correctional Facility Progress Report

Please consider placing this date on your calendars to attend and/or help with a variety of tasks that will help GCPC host an invigorating and efficient concert. The Kairos Team met on May 19 and began the process for identifying all the ways that the congregation can help on November 10. We will need your assistance.



Here is an overview of our itinerary from June 21–29

Friday, June 21 & Saturday, June 22

Overnight travel to Corpus Christi, TX. We will arrive in Texas and immediately hit the beach of Padre Island National Seashore. We will then head to our host church, Parkway Presbyterian Church (PPC) in Corpus Christi, and get settled.

Sunday, June 23 – Worship & Concert day

We will share some of our singing and ringing with our host church, Parkway Presbyterian, during their morning worship service. Later in the afternoon we'll present our concert at Brookdale Trinity Towers - Senior Living.

Monday, June 24 –Thursday, June 27 are Mission days

We will be serving with Presbyterian Disaster Assistance to help with the recovery of family dwellings that were damaged or destroyed in Hurricane Harvey of 2017. Please see the Youth Ministry page for more information on the work we'll be doing.

Thursday, June 27 – Evening Concert

We will present our music concert at 7pm at The Salvation Army in Corpus Christi.

Friday, June 28 – Mission, Music, & Sightseeing

Today will be a mix of several events. In the morning, our “mission only” people will finish the mission work with Presbyterian Disaster Relief and our “music people” will present a concert at Mirador Retirement Communities. In the afternoon we will do a bit more sight-seeing in the area by visiting an air craft carrier, or their aquarium, or one more time at the beach! That evening we will wrap it all up with our secret pal reveal and a special Vespers service presented by our graduated seniors.

Saturday, June 29 – Travel day

We will make the trek back to Overland Park. Between times to snooze we'll watch movies and have our annual Peter Bures “Rock, Paper, Scissors” tournament!

Sunday, July 7 at 10am – Home Concert

One Week Later – we'll have one worship service. It will be M&M Led Worship at GCPC when we will share our songs & stories with you from our trip. An all-congregation lunch will follow worship.

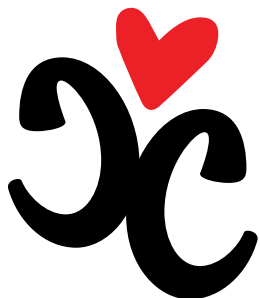
How can you be a part of the M&M trip?

- Be in worship on Sunday, June 16 and receive a prayer bracelet with one of the M&M's name on it. Please pray daily for that person. (Extra bracelets will be in the Concourse if you can't get one on the 16th.)
- Pray daily for the people with whom we come in contact during the week.
- M&M Trip Blog Updates. If you would like to keep up with M&M's on their trip to the Coastal Bend of TX bookmark this link: gcpcnmn.simplesite.com or check out GCPC's Facebook page.

If you didn't (or you did) get a prayer bracelet, here is a list of all who are going on the M&M trip. Pray for any and all of us!

Youth: Andrew Alka, Christopher Alka, Jacob Battaglioli, Lauren Callender, Lindsay Callender, Logan Callender, Luke Cashman, Sam Cashman, Marco Conti, Miles Dalton, Owen Dalton, Lexie Fleeman, Will Grice, Leif Johnson, Amy Kowalczewski, Kelly Kowalczewski, Ben Mason, Kat Mason, Lina McCamon, Maddie Passett, Jackson Rupp, Kylie Sutherland, Josh Sutherland, and Charlie Trigger.

Adults: Alison Alka, Kyle Becher, Jesse Bures, Trey Bures, Rachel Grice, Donna Heer, Samantha Johnson, Miles McDonald, Rebecca Prater, Brad Schmit, Mitch Trigger, Sarah Windeknecht, and our bus driver.



Grace Event Crew

Calling all able body men, women, and young adults (high school) to join a small group being formed, the Grace Event Crew. This Crew would set-up and take down tables and chairs for Connections & Care Team's church-wide events throughout the year. Most set-ups will be done on a Saturday and take down would be immediately following an event on Sunday. Crew members can volunteer to set-up only, take down only or do both. Any assistance is welcome.

Communication for an upcoming event will be done through an email that provides the details and requesting a reply of your availability. Won't you help?

We welcome a multitude of volunteers to make the Grace Event Crew effective. “Many hands make light work.” If interested, please contact Karen Fankhauser at 913-708-4485 or kfank@everestkc.net.

Mission Notes

June Communion Offering

The June Communion Offering will be collected in support of PCUSA's Pentecost Offering which this year focuses on three projects:

1. **The Young Adult Volunteer (YAV) program** is an **ecumenical, faith-based year of service** for young people (ages 19–30) in sites across the United States and around the world. YAVs accompany local agencies working to address root causes of poverty and reconciliation. Alongside this work, volunteers explore the meaning of their Christian faith and accountability to their neighbors in community with peers and mentors.
2. **Presbyterian Youth Triennium** is a gathering for high school age youth from the Presbyterian Church (USA) and the Cumberland Presbyterian Church that occurs every three years. The 2019 event is July 16-20, 2019 at Purdue University.
3. **A church wide initiative calling on Presbyterians to work with partners in the U.S. and worldwide to improve the quality of education for 1 million children by 2020.** This initiative builds on our strong Reformed heritage and Presbyterian history of both educational mission and advocacy and support for access to public education. On the national level, this initiative will center on strengthening early childhood education and reducing the dropout rate of adolescents.

Throughout the month of June, we are collecting school supplies for Apache Elementary.

These items will be added to those donated by the kids attending VBS. Needed supplies include: dry erase markers, pencils, notebooks, rulers, folders, sticky notes, markers, crayons, glue sticks, white glue, and headphones. Donations can be placed in the marked bin in the Weekday Entrance.

Presbyterians Around the World

The Bridge Builders

The article, "Mission Co-workers Speak for Global Advocacy - Part I," appeared in the March, 2019 issue of *Grace Notes*.

The July issue of *Grace Notes* will contain a second printing of this article as an example of the importance of the work of Mission Co-workers. With global partners, they support communities of people who often live under fractured living situations.

May 26, 2019 was Mission Worker Sunday.

The Mission Yearbook entry for that Sunday described Mission Co-workers as advocates, interpreters, bridge builders, and peacemakers.

Join us as we lift up in prayer Jeff and Christi Boyd and the people of Centra Africa, and Leslie Vogel and the people of Guatemala and Mexico.



Clerk's Corner

Session met on May 20, 2019 in room 5, with Reverend Mitch Trigger serving as moderator. In addition to the elders, Deacon Anita Hadel and Matt McBride were present.

Consent agenda: The minutes of the April stated Session meeting and the May 12 called meeting, as well as a few membership requests, were approved (*total membership is now 494*).

Team minutes: Matt McBride was in attendance to talk about plans for financing the facilities repairs and upgrades necessary to keeping our building going. He pointed out that the approved budget has a \$102,000 deficit, instead of \$153,000, and that the budget includes \$40,000 of increases that the various teams had asked for. He submitted a detailed estimate of the necessary projects for the next five years identified by the Facilities team, totaling \$566,000. The Facilities and Finance team submitted a motion that Session approve going ahead with the projects, using an existing line of credit. At the end of each calendar year, the amount owed on the line of credit will be refinanced on a ten-year note with Central Bank. The total of the loan will be repaid by December 2034. After extensive discussion, the motion passed.

Finance team also asked Session to approve the team planning two events to raise funds: a trivia night and a barbecue contest. The motion passed.

Connections & Care: The board of Deacons and the Stephens Ministers will report to Session, instead of the Connections & Care team.

Mission: Two new directors for the IHN program are needed. One person has volunteered so far. If another volunteer isn't found, the other option is to not be a home church but to help out when another church hosts.

Pastors' report: The pastors submitted a report of their activities during the past month.

Deacons' report: Anita Hadel reported that Kathy Williams is a wonderful "head" deacon. Thank you, Kathy, for your attention and efforts.

Executive Committee report: The committee reviewed the proposed new bylaws.

Old business: Session heard a report from the Nominating Team, which is continuing to search for elder candidates. New elders will be elected by the congregation at the meeting on June 16.

New business: Session approved the proposed changes to the bylaws, which the congregation will vote on at the June 16 meeting. (*Copies will be available at church or on the website for review beforehand.*)

After sharing joys and concerns of the congregation, Mitch closed the meeting in prayer and it adjourned at 8:31 p.m.

Congregational Meeting June 16

A congregational meeting will be held Sunday, June 16. In addition to other business, revised bylaws will be voted on. You may review these bylaws on our web site prior to the meeting.

Visit gcpc.org; click on the "**Resources**" tab, and then on "**GCPC Proposed Bylaws 2019.**"

Finance Team Update

As you may be aware, the 2019 Budget for GCPC was approved by Session with a deficit of \$150,000. Due to a calculation error, the projected revenues for 2019 were understated by \$52,000, so the budget deficit is now projected to be \$102,000.

"What does that mean?" Well, our anticipated revenue for the year is \$102,000 less than the anticipated annual expenses.

"How can we be that short when we keep celebrating that we have no debt?" The building still must be heated and cooled, salaries of staff paid, trash cans emptied and floors swept and mopped, phone bill paid — the list goes on and on.

"What can I do to help?" If you have not made a pledge for 2019, you can still financially support the church. *Go to gcpc.org*, and click "**Online Giving**" at the bottom of the homepage. Click on the red "**Grace Covenant Online Giving**" link, fill in the amount you wish to give and leave the "**To**" field at "**2019 Non-Pledge Offering.**"

Stay tuned for more information soon — we are confident that together we shall overcome this deficit!

Two Health Questions - Part V

Part IV of this article introduced the metabolic syndrome as a risk factor for the development of type 2 diabetes. The metabolic syndrome, as defined, featured a cluster of specific metabolic disorders. Combinations of these disorders in individuals increase the risk for the development of type 2 diabetes. This article addresses high blood pressure, one of the four remaining risk factors for the metabolic syndrome.



In 2017, the American Medical Association (AMA) published new guidelines for blood pressure measurements listed as **"Guidelines for the Prevention, Detection, Evaluation and Management of Hypertension in Adults."** According to the AMA, many adults don't meet the new guidelines for a normal blood pressure reading. The AMA recommended follow-up health care to identify the best treatment. In some situations, health care providers may recommend use of medications. In some instances, health care providers may recommend adoption of dietary changes and an increase in activity/exercise only.

The 2017 AMA guidelines for normal blood pressure, based on two or more office visits, list the following:

Systolic — less than 120 mg hg (mercury)
and Diastolic — less than 80 mg hg.

High blood pressure occurs frequently in people with type 2 diabetes, beginning before or after the onset of diabetes. Also, high blood pressure can accelerate the changes that lead to the development of complications. This article does not describe the intricate changes that lead to complications such as conditions of the kidneys, heart/circulation, and eyes.

The July issue of *Grace Notes* will describe key information about the three remaining risk factors. These include high-density lipoprotein cholesterol, triglycerides, and fasting blood glucose.

Congregational Meeting

The Session of Grace Covenant has called a Congregational meeting for Sunday, June 16. The purpose of the meeting will be to receive a report of the nominating committee, approve elders, and changes to the newly revised by-laws. Nominations for members at large will be selected to serve on the Nominating Committee. The meeting will be held at both the 8:50 a.m. and 11:05 a.m. services.

Team Leader Calendar Planning

Wednesday, June 12, 7pm

Team leaders are invited to meet on Wednesday, June 12 at 7pm in Room 5 to plan the calendar for the 2019 and 2020 church year.

The staff have put together a draft calendar and now we need team input in order to create a calendar that offers a great schedule of activities and events. It will be a great time for creative planning!

Team Leaders: If you are unable to attend, please arrange for a representative to come.



stephen
MINISTRY

Stephen Ministry Exploration Conversation

Bear one another's burdens, and in this way you will fulfill the law of Christ (Galatians 6:2, NRSV).

Stephen Ministry is the one-to-one lay caring ministry. Stephen Ministry congregations equip and empower lay caregivers—called Stephen Ministers—to provide high-quality, confidential, Christ-centered care to people who are hurting.

Rev. Sue and Mitch are interested in re-establishing the Grace Covenant Stephen Ministry program. **If you are a Stephen Minister or Leader please join us for a meeting to develop a plan for moving forward.**

**We would like to have a meeting
Wednesday, June 19 at 7pm in Room 5.**

Please RSVP to sue.trigger@gcpc.org so we know who will be attending.

Matthew 5:9

"Happy are people who make peace, because they will be called God's children. (CEB)

"Blessed are the peacemakers, for they shall be called sons of God. (NASB)

Over the life of the church, the Session of GCPC has discerned and committed to three areas of focus which the KAIROS team works hard to fulfill. GCPC has:

- made a "**Commitment to Peacemaking**"
- identified as a "**Hunger Action Congregation**" and
- qualified as an "**Earthcare Congregation.**"

KAIROS begins a new series in Grace Notes this month and extending into early next year identifying these programs and what our congregation has committed to do.

Let's begin with the Commitment to Peacemaking. The PCUSA says that making the commitment to peacemaking...

- declares that becoming a part of God's peace-giving is a mission priority;
- challenges growth of the group in its peacemaking journey;
- establishes a framework for planning and implementing peacemaking in every aspect of ministry
- invites Presbyterians to work for peace in their own lives, families, communities and international arena;
- provides a means for evaluating peacemaking efforts; and
- encourages contact and cooperation with other congregations, communities and individuals in other denominations and faiths involved in peacemaking.
- READ more at:
www.presbyterianmission.org/ministries/peacemaking/making-commitment/

The commitment outlines that we as a congregation work in eight areas of ministry. Three of those areas are:

Worship: We are to provide worship through song, and word, and deed that expresses the reality of God's peace giving.

Prayer and Bible Study: We have committed to encourage prayer, Bible study and spiritual disciplines that nurture and deepen the spiritual life of the community and equip people to share the gospel message of peace to the world around us.

Receiving the Peacemaking Offering: Support the church-wide peacemaking effort financially by receiving the Peacemaking Offering (now called the Peace & Global Witness Offering) on World Communion Sunday.

If peace, social justice, earth care or any combination of them appeals to you as a member of GCPC please join us and walk with the Kairos Team.

Marketing GCPC

The **Welcoming/Marketing Team** is looking for some assistance in a few areas:

Photographers to take photos at GCPC events, gatherings, special services, etc. to share with our team for social media;

Banner/Flag set-up/take-down for special services, holidays, etc.;

Coordinator to help with scheduling/developing a marketing calendar for our events/music events/services/classes (*not graphic design related*).

No committee work associated with these volunteer jobs. If you can help with any of these areas, call or email Kim Krueger at 913-709-9555 or kim.krueger@att.net.

Caring Visitors Needed

The **Connections and Care Team**, along with our pastors, are looking for members to volunteer to visit church members who are in hospitals, nursing homes, rehabilitation centers, and their own homes. The visits are arranged around your availability and where you are comfortable visiting.

For additional details or questions, please contact Nancy Kalesz, nancy.kalesz@gmail.com, or Chelly King, chelly41RN@gmail.com. A brief training session will be provided prior to assigning volunteers for their first visit.

We are also looking for members to assist in sending cards to members that are home bound, at nursing homes and rehab centers. The job would be shared by four individuals. Postage and card cost would be reimbursed as needed.

Please contact Pat Collins, p5c_70@yahoo.com (Note the underscore between the "c" and "70") or call 913-491-6603.

Inclusive. Family Oriented. Welcoming.

11100 College Boulevard
Overland Park, KS 66210
Phone: 913-345-1256
Fax: 913-345-1198

gcpc.org



Follow us on Social Media!

Facebook: facebook.com/GraceCovenantPresbyterian

Twitter: @GraceCovPres

Instagram: @gcpc_overlandpark

CELEBRATING GOD'S ALL ENCOMPASSING LOVE!

CHURCH STAFF

Co Pastors

- Office hours: Monday-Thursday
[Mitch Trigger](mailto:mitch.trigger@gcpc.org), mitch.trigger@gcpc.org.....ext.18
[Sue Trigger](mailto:sue.trigger@gcpc.org), sue.trigger@gcpc.org.....ext.15

Director of Music Ministries

- Office hours: Monday-Wednesday, Friday
[Rebecca Prater](mailto:rebecca.prater@gcpc.org), rebecca.prater@gcpc.org... ext. 13

Church Administrator

- Office hours: Monday-Friday
[Patrick Bell](mailto:patrick.bell@gcpc.org), patrick.bell@gcpc.org..... ext. 10

Director of Youth Ministries

- Office hours: Monday-Thursday
Miles McDonald, miles.mcdonald@gcpc.org.. ext. 17

Finance Administrator..... Tara Hyder

- Monday 8-4; Tuesday/Wednesday/Thursday 8-12

Organist..... Linda Dover

Contemporary Music Coord...... Denice Trawicki

Contemporary Music Drummer.....Daniel Cole

Technical Director for Worship..Miles McDonald

Child Care Coordinator.....Carolyn Chaffin

Kid's Day Out Director.....Kathy Connor

Wedding Coordinator.....Lara Schesser

Funeral Coordinator.....Mary Sue Thomas

12

ELDERS

Jacob Battaglioli	Bryan Evans
Harold Frye	Donna Goeckler
Tim Hayden	Judy Hook
Terry Kolich	Lynn Long
Julie Passet	Hilary Schmidt
Aaron Soule	Josh Sutherland
Nelson Townsend	Marcia Turner
Cheryl Johnson, Clerk of Session	

SUPPORT STAFF

Deacon ModeratorKathy Williams
Executive CommitteeBryan Evans, Donna Goeckler, Cheryl Johnson, Julie Passet, Nelson Townsend
Newsletter Editor Kim Krueger
Prayer Chain.....Cheryl Johnson
Presbyterian Women ModeratorVacant

MINISTRY UNITS

Congregational Nurture Unit Moderators

Connections and Care..... Lisa Feyh
Worship and Music..... Sarah Evans, Barb Purvis, Anne Stroud

Education Ministry Unit Moderators

Adult Pat Collins
Children Erin Frye, Angela Krug
Youth.....Susan Sutherland

Reach Out Ministry Unit Moderators

KairosDave Pack
MissionMikki Walker
Welcoming and MarketingRosemary Gibson, Kim Krueger

Supportive Ministry Unit Moderators

FacilityMarc Feyh
Generosity and Finance..... Matt McBride
PersonnelLinda Bridges

Worship Schedule

8:50am - Praise Team Led Worship
10am - Church School All Ages
11:05am - Choral Led Worship
Childcare is provided during Worship.

Upcoming Newsletter Article Deadlines

July Issue - Deadline, June 18
August Issue - Deadline, July 15