

 **ONE GREAT HOUR OF SHARING**  
SPECIAL OFFERINGS  
HUNGER • DISASTER • DEVELOPMENT



March 5–April 20, 2025

Join with Presbyterians worldwide in sharing God's love with our neighbors-in-need around the world by providing relief from natural disasters, food for the hungry, and support for the poor and oppressed.

This Lenten season, please give generously to One Great Hour of Sharing.

**WAYS TO GIVE —**

- + Through your congregation
  - + Online at [pcusa.org/give-oghs](https://pcusa.org/give-oghs)
  - + Text OGHs to 91999 to give
- or-



You can help sustain the important ministries and programs that are supported by One Great Hour of Sharing Offering by making an online gift at any time throughout the year. Checks may be sent Presbyterian Church (U.S.A.); P.O. Box 643700; Pittsburgh, PA 15264-3700.

Thanks to your heartfelt gifts, One Great Hour of Sharing currently supports projects in over 100 countries.

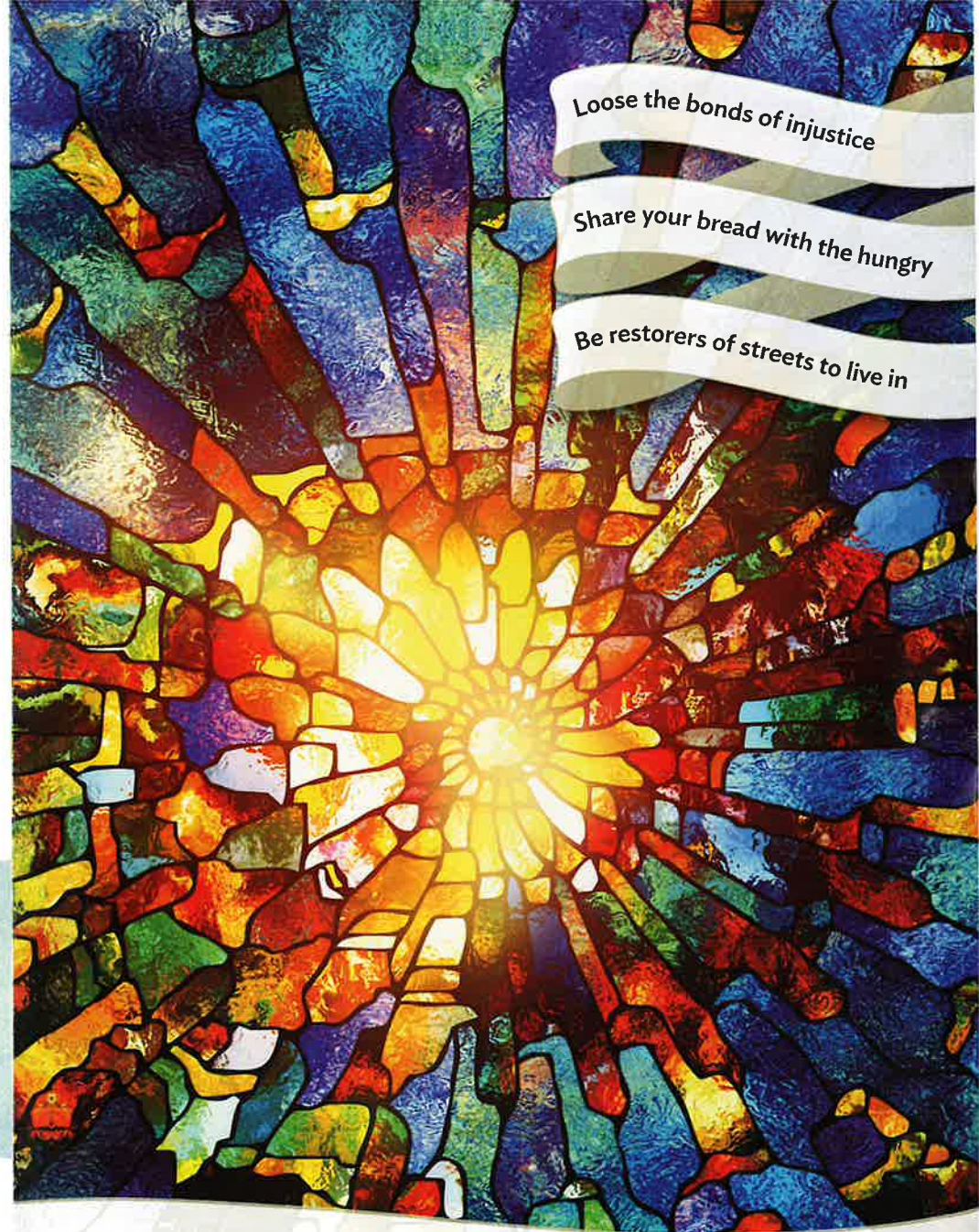
**IF WE ALL DO A LITTLE, IT ADDS UP TO A LOT!**

To learn more about how your gift to One Great Hour of Sharing makes a difference, visit [pcusa.org/oghs](https://pcusa.org/oghs)



One Great Hour of Sharing is one of four annual special offerings. The four churchwide Special Offerings of the Presbyterian Church (U.S.A.) play an important role in defining what it means to be a connectional church in the twenty-first century, bringing together the diversity of the PC (USA) to focus and take faith-based action on shared concerns. The Offerings offer opportunities for partnership, learning, and witness and profoundly affect the life of the church as a collective witness to Jesus Christ's love for the whole church.

12138-25-104



*Loose the bonds of injustice*

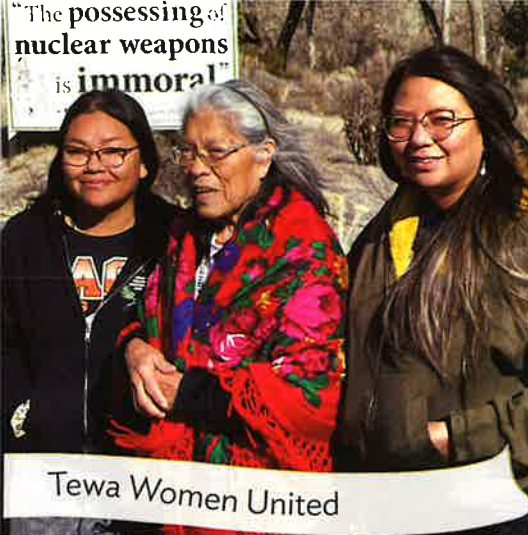
*Share your bread with the hungry*

*Be restorers of streets to live in*



**ONE GREAT HOUR OF SHARING**  
SPECIAL OFFERINGS  
HUNGER • DISASTER • DEVELOPMENT





Tewa Women United



Alliance for Community Services



Juneli Nepal

*Every time we set a table  
where all hungry hearts  
can eat;  
every time we welcome  
neighbors and we add  
an extra seat;  
and every time we live  
as servants, free to wash  
each other's feet,  
In our living, in our giving,  
**WE ARE THERE.***

**WE ARE THERE**, with Tewa Women United, a non-profit organization in New Mexico founded and led by Native women to address environmental and social justice concerns, shape policy, and reclaim the people's agricultural legacy.

**WE ARE THERE**, with the Alliance for Community Services in Chicago who work to assure civil and human rights for people with disabilities, low-income families and front-line service workers.

**WE ARE THERE**, with Juneli Nepal, working to provide with safe, clean drinking water and sustainable skills to many families following a devastating earthquake.

For more than 75 years,  
**One Great Hour of Sharing**  
has partnered with others to take action  
to share God's love.

Through these three life-saving programs,  
we are there to advance the causes of  
justice, resilience and sustainability.

**PRESBYTERIAN DISASTER ASSISTANCE**

*Restore Streets to Live In*

**PRESBYTERIAN HUNGER PROGRAM**

*Share your Bread with the Hungry*

**SELF-DEVELOPMENT OF PEOPLE**

*Loose the Bonds of Injustice*



*Please give what you can.*

**IF WE ALL DO A LITTLE, IT ADDS UP TO A LOT!**